

Now

VOXAIR

AN AIRFORCE NEWSPAPER



Authorized second class matter by the Post Office Department, Ottawa, Ontario, and for payment of postage in cash.

The views expressed herein are not necessarily those of the Royal Canadian Air Force or the staff of VOXAIR.

Vol. 12, No. 35.

WINNIPEG, MANITOBA

August 30, 1963

WELCOME HOME CLAUDIA!



Group Captain D. A. Willis welcomes home Claudia McPherson after her successful channel swim attempt. After a parade along Portage Avenue, the party came to the Recreation Centre at RCAF Winnipeg. Speeches of welcome were given by the Lieutenant Governor of Manitoba, the Honourable Errick F. Willis and by various civic dignitaries.

Senior RCAF Chaplain Retires

Wing Commander James Dunn of New Westminster, B.C., who is the senior RCAF Protestant chaplain in Training Command retired from active air force life recently.

For the past eleven years W/C Dunn has been Staff Officer Religious Administration with Training Command, the last four years being spent at TCHQ in Winnipeg. His duties at Winnipeg entailed responsibility for the religious administration and spiritual welfare of the ten stations in Training Command.

Chaplain Dunn was born at Indore, India, and came to Canada as a child. He received his education at the University of British Columbia and Knox College, Toronto.

Before enlisting in the RCAF in 1942 W/C Dunn was a clergyman with the Presbyterian Church at Kamloops, B.C. During this period

13 YEAR OLD RESCUES SWIMMER



SUZANNE LeBRUN

On Tuesday, 20 August, Suzanne LeBrun was standing beside the diving pool at Bison Park when she heard a cry for help. She noticed that a girl in the centre of the pool was in distress so she immediately dived in to rescue her. In spite of the fact that Suzanne is younger and lighter than the girl, she was successful in bringing her to the edge of the pool where the lifeguard revived her with artificial respiration.

Suzanne is the daughter of F/L and Mrs. J. L. LeBrun, 86 Brain-tree Crescent.



W/C J. DUNN

he also found time to be a member of the Rocky Mountain Rangers Reserve Army Regiment.

During the Second World War W/C Dunn was chaplain at Ucluelet, Coal Harbour, and Patricia Bay, B.C. In 1943 he was transferred to Europe where he served in England, France, Belgium, and Holland. He was awarded the Croix de Guerre with Palm by the French Government for distinguished services during the liberation of France.

Chaplain Dunn is married to the former Frances Robinson of New Westminster, and the couple have one daughter, Sharon, 23, and two

(Continued on page 6)

Community Chest Activities

Frank L. Wagstaff, Department of Finance, Comptroller of the Treasury, Ottawa, told Winnipeg Lions Club members recently that the Community Chest was a practical and effective demonstration of community planning, fund raising and allocation procedures.

Mr. Wagstaff was in Winnipeg last week to organize a Federal Service Division of the Community Chest for approximately 11,000 federal government employees.

"The Community Chest is a peculiarly North American idea," he noted, "that has been developed during the past 75 years to provide greater flexibility to meet new situations and new needs and to carry out the social and welfare objectives of the community with increasing effectiveness."

Growth of organized community giving plans was slow, Mr. Wagstaff said, and although the first organization was begun in 1917 in Canada, they did not begin to increase rapidly until the war years 1939 to 1945.

By 1955 there were 63 in Canada. The 1939 total for funds raised was 4 million dollars but by 1960 it was 29 million dollars—a seven-fold increase.

"The key problem faced by the Community Chests or United Appeals of today is that most adults have either forgotten or are too young to remember the chaos and confusion of the days before federalized fund raising."

"There was much duplication and many gaps as appeals multiplied to meet the growing needs to provide the increasing specialization and knowledge required to serve those needs."

Mr. Wagstaff noted that most of the agency members of Chests and Funds were concerned with the health, welfare and recreation needs of the community.

"The principle of Community Chests and United Appeals is nothing new," he said, since from the very beginning people had been helping people. In this modern society due to expanding growth and needs of communities—people can only help people effectively through an official organization like the Community Chest.

Station Winnipeg Astra Credit Union

Your Astra Credit Union is a Cooperative Non-Profit Savings and Loan Organization, organized by the Credit Union League of Manitoba in November 1958, for the purpose of serving the people

(Continued on page 2)

fighters that met recently of... German Air Force TF-104G... S. Appleby, Norton Air Force... of five different powerplants... on-flyable, it is in the British... TF-104G as... program are Canada, Italy... 1700 Super Starfighters is... Major Appleby on

time to visit Lower... 9 miles north of Win... considered the best... in Western Canada... 130 years ago. Many... items formerly... the Hudson Bay Com... are now on view at... Visiting hours are... during the summer

er month
POLICY

use (this includes

om RCAF.

Dining Room
e 943-6424.

N LIFE
CO.

Winnipeg

Introduction To Hunting

Fifteen million American hunters traveled three billion car-miles and spent nearly \$2 billion hunting last year! These figures are expected to jump this season as they have every season since Daniel Boone "cilled" his first "ba'r."

What's the attraction?

For most riflemen it's the white-tail deer, a canny fellow who inhabits forests and thickets in every one of the 50 states and every Canadian province. More shotgunners squirt their lead at rabbits and squirrels than any other American game, including ducks and geese who dodge no mean amount of flack themselves. Grouse, quail, pheasants and woodcock pull gunners into the fields by the millions, too.

If you're going into the bush for the first time this season, there's a lot you'll have to know.

Choosing a suitable gun is first on the list, say experts at the Remington Arms Company. If you're after whitetail deer, you'll need a

(Continued on page 4)



VOXAIR is published every Friday with the kind permission of The Commanding Officer, Royal Canadian Air Force Station Winnipeg, Westwin, Manitoba.

ARTICLES may be reprinted by other publications providing credit is given to VOXAIR.

EXECUTIVE AND EDITORIAL OFFICES: R.C.A.F. Station Winnipeg, Westwin, Manitoba. Telephone VE 2-1311, Local 695. Printed by The Wallingford Press Limited, 303 Kennedy Street, Winnipeg, Man.

VOXAIR is distributed to every R.C.A.F. Mess, Lounge, Reading Room and Library in the world. Subscriptions are priced at 1 year (52 issues) \$2.50; 3 years (156 issues) \$7.00; 5 years (260 issues) \$11.00. Postpaid anywhere in the world. Address all subscription correspondence to: Subscription Department, Voxair, R.C.A.F. Station Winnipeg, Westwin, Manitoba. Applications from overseas should be accompanied by an international money order for the necessary amount. Canadian subscribers should make their cheques payable to: R.C.A.F. Winnipeg Station Fund.

ADVERTISING RATES available on request.

Honorary EditorW/C W. B. M. MILLER
General ManagerF/L J. PECKITT
Editor-in-ChiefF/L M. W. THOMPSON
Assistant EditorsF/L R. F. BROWN
F/O D. S. TREDDENICK
Advertising-LOCAL 337F/L G. A. DAWSON
Photo ReporterCPL. MEL DAGG
CirculationMR. DELBERT BOWLES



EDITORIAL CORNER

Self-Improvement

The greatest thing in the world is the human personality. By personality we do not mean social veneer. Personality is the impact of the total man on his environment. That total man is physical, intellectual and emotional. These three facets are interdependent, and out of a well-rounded development of them comes integrity of character.

Other things being equal, the individual with energy, vitality and power to stand out beyond the group is in a position to offer a greater contribution in life. To have health, the human body must be taken care of. This requires light eating, sufficient exercise and adequate rest. Gormandizing and intemperance should be avoided. Without sufficient exercise, bodily processes are decelerated and a person is apt to become despondent. Men, especially, refuse to recognize fatigue. There should be no pride in enervating oneself to the long range detriment of health. Self-improvement is always available. G. A. N.

COPY DEADLINE FOR 6 SEPT. TO - DAY AT 1600 HRS.

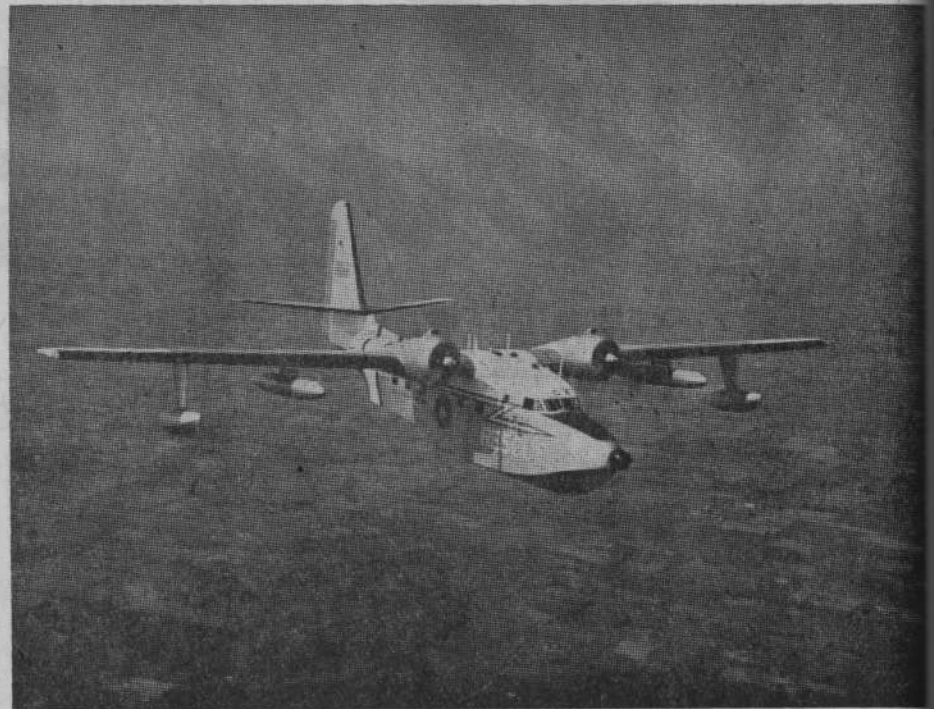
ASTRA CREDIT UNION (Continued from page 1) Personnel of RCAF Station Winnipeg with a thrift program, and providing loans exclusively for provident and productive purposes.

Everyone is a consumer of food, clothing, shelter and services. Saving and borrowing money is one of the services we have become accustomed to.

Our Service Credit Unions are one of the prime examples of successful cooperatives. The popularity of Credit Unions among service people has propagated the formation of Credit Unions on service establishments to the point where most units now have their own Credit Union or have been included into the bond of association of a local civilian Credit Union.

Advertisement for Canadian Aviation Electronics Ltd. featuring the 'cae' logo and a maple leaf emblem. Text includes 'CANADIAN AVIATION ELECTRONICS LTD. MONTREAL WINNIPEG'.

The Albatross



Beginning with this issue, VOXAIR will present a series of photographs depicting aircraft in use with the RCAF today. The Albatross first in a series of approximately thirty aircraft, is shown above.

The triphibious Grumman SA-16B Albatross, already widely acclaimed for its work in search and rescue, came into service in 1962 as the RCAF began to replace its veteran Canso amphibians.

Removable skid and ski gear on fuselage and wing-tip floats enable this versatile aircraft to use unprepared snow or ice surfaces otherwise too rough for landing or take-off. Reversible propellers give it manoeuvrability on the water and a shortened landing-run, while JATO equipment gets it airborne quickly under adverse take-off conditions.

The Albatross is used by the RCAF mainly for search and rescue operations and mercy flights and renders valuable service over the Canadian mainland, the coastal waters and the Arctic archipelago.

Maximum endurance of the Albatross is 23 hours. Its maximum range is 2,900 miles, and it can carry 8 passengers, 12 litter patients and one attendant, or up to 5,000 lb. of cargo.

- Length - 62 ft. 9 in.
Span - 96 ft. 8 in.
Height - 25 ft. 11 in.
Weight (max.) - 48,000 lb.
Speed (cruise) - 180 m.p.h.
Power - Two 1,525 h.p. Curtiss-Wright R1820s

Our ultimate aim, taking into consideration the shifting of RCAF operations and personnel from location to location on the unit, is to obtain a permanent location, from which a continuing drive for better service could be organized. It is our frank opinion that the Credit Union could increase the volume and efficiency of its operations at least 50% should we be favoured with larger permanent quarters.

MEMBERSHIP

Astra Credit Union membership has expanded beyond all expectations. We are presently serving some 150 personnel in the Fighter Wing units overseas, we have members right across the Canadian provinces, in the U.S.A. and in other parts of the world including Beirut Lebanon, and the North West Territories. With the advent of more unit credit unions, a static membership is being retained through exchange of members upon transfer.

LOANS

These included automobiles - purchases and repairs, which was by far the most popular; others included land and buildings, fur-

niture and clothing, insurance, taxes, investments, hospital-medical and dental, education, vacation small business loans, consolidation of debts, marriage expenses and others too numerous to mention. It is estimated that this service has saved personnel in excess of \$100,000.00 in finance charges alone without considering the various other charges such as life insurance and filing fees, that are assessed by the majority of outside lenders.

We appreciate the great amount of cooperation received from the section heads, padres and benevolent fund, which they have given the credit union where the financial welfare of their personnel was at stake.

SAVINGS

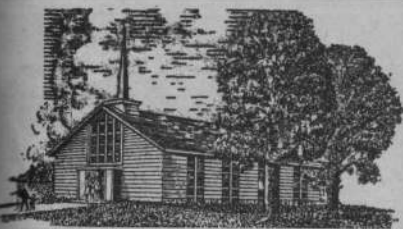
Astra pays the highest rate of Deposits of all credit unions in Manitoba and is among the 23 of 250 credit unions who pay the maximum rate by provincial law on shares.

BENEFITS

Almost \$10,000.00 in insurance monies has been paid to the beneficiaries of members who had savings accounts or loans with Astra Credit Union when they died. One claim alone amounted to \$1,800.00. This in addition to the \$1,800.00 in savings provided an estate of \$3,600.00 from the credit union to the widow who has three children.

Advertisement box with text: MOVING SOMEWHERE? 'GO BY JET' CALL FRANK BAILY, JU 9-6327

(Continued on page 3)



Chapel News

Rev. C. H. White, Chaplain (P).
Office: VE 2-1311, local 417.
Home: 837-3832-460 Conway.

Sunday, 1 Sep.—Trinity XII.
Holy Communion (Anglican
rite): 9 a.m. and 11:45 a.m.
Divine Worship and Sermon:
9 a.m.
Sermon subject: Confession and
forgiveness.
Nursery facilities available at
9 a.m.

BAPTISMS & MARRIAGES

Please advise chaplain well in
advance so that instruction can be
given and necessary certificates can
be completed.

MEETINGS

Chapel Committee will meet
Wed., 4 Sep., at 3 p.m. at the chapel.
Senior Choir practices begin
Thurs., 5 Sep., at 8 p.m. New mem-
bers will be welcomed.

Sunday School will re-open soon.
Personnel interested in teaching or
assisting are asked to call the chap-
lain.

(The Bible and You—members
of the congregation are invited to
bring their Bibles with them to the
services so that they may follow
the lessons, and read the context
of the portion of Scripture used as
a basis for the sermon. Young peo-
ple find this helpful.)

THE TWO SINNERS

Two women came to a counselor
for guidance. One had been un-
faithful to her husband and was
weeping bitterly. The other had
found what she deemed an exem-
plary life, but she was unhappy.
The counselor spoke to the first
woman. "Go to the field beyond
the garden wall. Find the heaviest
stone you can carry and bring it
here to me."

To the other woman he said:
"Bring me as many small stones
as you can carry."

The women did as told. Then the
wise man asked them to return the
stones. "Put each one back in the
exact same place where you found
it," he said.

The first woman soon replaced
the rock, but the other woman
couldn't remember where she had
picked up any of her little stones.
So she returned dragging her sack
of stones.

"You are well aware of your
great sin," the wise man told the
first woman. "Just as you knew
where to return the big rock, so
your admission you have freed
yourself from your guilt. God has
forgiven you, so now forgive your-
self and profit from experience."

To the second woman, he said:
"You do not have any big sins, but
many small ones which make you
unhappy. As you lost track of
where you picked up the small
stones, so, too, are you unaware of
your faults. You pretend to be
good but God is not fooled. Many
small sins can be worse than one

big one. Do not judge others; you
have enough to do improving your
own life."

To this story, written by Leo
Tolstoy, may be added these words
from Holy Writ: "If we say we
have no sin, we deceive ourselves
and the truth is not in us; if we
confess our sins, He is faithful and
just to forgive us our sins, and to
cleanse us from all unrighteous-
ness." —CHW

ROMAN CATHOLIC CHAPEL NEWS

Rev. V. Villeneuve (S/L), Train-
ing Command Chaplain (RC).

Rev. C. E. Grant (F/L), Senior
Station Chaplain (RC)

Rev. J. Y. Cormier (F/L), Sta-
tion Chaplain (RC)
VE 2-1311, Local 272.

MASSES

Sunday — 9 and 11 a.m.
Weekdays — 4:30 p.m.
Saturday — 11 a.m.

CONFESSIONS

Monday-Friday — Before every
Mass.

Saturday—1900-2000 hours.

Sunday — Before and during
both Masses.

Other times—by appointment.

NOTE: If there is no priest in
the Confessional, ring "Confession
Bell." Parents are asked to remind
their children to come to Confes-
sion after school on Friday after-
noon, that is, from 1600 to 1630
hours.

NURSERY SERVICE

During 1100 hours Mass, young
children of parents who attend this
Mass, will be cared for by nursery
service in the Chaplains' quar-
ters.

BAPTISM

Usually on Sunday afternoon.
If this is inconvenient, another
day of the week may be chosen.
Telephone the Chaplains' secretary
during working hours to arrange
the date and the hour. This will
make it possible for the papers and
certificates to be filled in before-
hand.

MARRIAGE

Contact the Chaplain or his sec-
retary at least one month before-
hand if both parties are Catholics.
In the case of a prospective mixed
marriage, notice should be given
at least two months in advance in
order to give time for the couple
to follow the instructions required
by Church Law.

Psalm XCIX

Acclaim the Lord all you on earth;
and serve the Lord with joy;
Into His presence gladly go, your
love without alloy.
Know that the Lord is God: He
made each one of us, and wills
To pasture us, His chosen sheep, on
heaven's eternal hills.
Enter His gates with praise and
sing a hymn while you go
Into His courts; give thanks to Him
whose Holy Name you know.
For He is good, our gracious Lord,
His mercy without end.
His faithfulness each age endures,
His power to defend.

(Adapted by M. A. Schreiber)

ADJACENT CHURCHES

ROMAN CATHOLIC

St. Ann's, 271 Hampton St., Rev.
F. X. Macaulay, TU 8-2673.

St. Paul the Apostle, 2400 Por-
tage Ave., Rev. J. J. Currie, VE
2-2970.

PROTESTANT

Bethel Baptist, 205 Roseberry St.,
TU 8-5542.

St. Bede's Anglican, 99 Turner,
Rev. G. Gardiner, VE 2-0950.

St. David's Presbyterian, 217
Wallasey St., Rev. N. W. B. Phills,
VE 2-0224.

St. Stephen's Lutheran, 122 Ness
Ave., Rev. Walter G. Becker, VE
7-2409.

Salvation Army Citadel (St.
James), 221 Hampton St., Captain
Albert Milley, TU 8-1633.

Silver Heights United Church,
Garrioch and Mount Royal, Rev.
Ian Harvey, VE 2-6071.

Faith Lutheran Church, 325
Wallasey St., Rev. W. A. Ritter VE
2-3700.

Sturgeon Creek United, 192
Thompson, Rev. W. Conly, VE
2-3520.

STATION LIBRARY

Recreation Centre
(Bldg. 90—Rm. 25)

HOURS OF OPERATION

Monday to Friday—
1200 hrs. - 1730 hrs.
1800 hrs. - 2100 hrs.
Sunday—
1400 hrs. - 1730 hrs.

LABOUR DAY WEEKEND

Library will be closed as follows:

Saturday, 31 August.
Sunday, 1, September.
Monday, 2 September.

OPEN Tues., 3 Sep. at NOON.

NEW BOOKS

Devil's Harvest—Frank G. Slaughter. The struggle of two men; rivals in love as well as in science.

Tin Drum—Gunter Grass. A novel of incomparable narrative zest and penetrating social criticism.

Brutal Friendship—F. W. Deakin. Mussolini, Hitler and the fall of Italian Fascism.

Stn. Library would like to say thank you for donating books to Library—Miss S. Heppner, Mrs. A. Middleton, Mrs. C. Greiff.

Chaplain Transferred



S/L J. E. V. VILLENEUVE

Squadron Leader J. E. V. Ville-
neuve of Ste. Justine de Newton,
Que., who is a Roman Catholic
Chaplain in the RCAF, has been
transferred to Training Command
Headquarters at Winnipeg.

Chaplain Villeneuve has been
appointed the Staff Officer Reli-
gious Administration at TCHQ and
is responsible for the religious and
spiritual welfare of the ten stations
which comprised Training. Prior to
his arrival at Winnipeg, S/L Vil-
leneuve was chaplain at the Col-
lege Militaire Royale at St. Jean,
Que., for several months. Previous
to that he was Staff Officer Reli-
gious Administration at Air Trans-
port Command Headquarters at
Trenton from 1960 until early 1963.

A member of the Dominican Or-
der, Chaplain Villeneuve was born
at Ste. Justine de Newton, and
received his education at Rigaud
College and the University of
Montreal.

He entered the RCAF in 1942 and
served as chaplain in Canada and
Newfoundland until 1945 when he
was transferred overseas where he
served in England and Germany.

In 1948 S/L Villeneuve obtained
his release from the RCAF and
served as a parish priest in Ottawa
until he rejoined the air force in
1954.

A comment overheard when a
group of Salesmen were coming
out of a meeting sums up the way
most of us feel at some time or
other: "It seems like the only time
I open my mouth is to change
feet!"



'Blue Heaven'
the finest
DIAMONDS

Available at

IMPERIAL JEWELRY CO. LTD.

545 Ferry Road, St. James, Winnipeg 12, Man. SP 5-8201

ent a series of photo-
today. The Albatross,
s shown above.

, already widely ac-
into service in 1960
nphibians.

wing-tip floats enable
ce surfaces otherwis
ellers give it manoeu-
n, while JATO equip-
off conditions.

or search and rescue
ble service over the
ctic archipelago.

hours. Its maximum
12 litter patients and

iss-Wright R1820s

othing, insurance, tax
nts, hospital—medica
education, vacations
ss loans, consolidation
rriage expenses and
umerous to mention
d that this service has
nel in excess of \$100-
ance charges alone
onsidering the various
s such as life insur-
ng fees, that are as-
e majority of outside

iate the great amount
on received from the
s, padres and benevo-
hich they have given
ion where the finan-
of their personnel was

SAVINGS

s the highest rate of
all credit unions in
d is among the 23 of
ions who pay the max-
by provincial law on

BENEFITS

0,000.00 in insurance
een paid to the bene-
members who had sav-
s or loans with Astra
a when they died. One
amounted to \$1,800.00
tion to the \$1,800.00 in
ided an estate of \$3-
he credit union to the
has three children.

(Continued on page 5)



By DICK GINTER

We regret that we must report LAC Pat Gill's departure. He is leaving the service as of the 26 Aug. but will be remaining in the area for some time. Pat has been a congenial pal to all the chaps who know him. His wit and good nature will be missed.

Pat plans on getting married on Sep. 28 to Miss Ann Gula, a local girl. Congratulations, Pat and Ann.

Congratulations are also in order for FS Brawley. He passed his driver's test at first crack with flying colors. Very well done, Flight.

The bird watchers must be an industrious lot. The only time they stir from the grindstone is during data collecting trips. Don't they know that all work and no play is contrary to Hugh Hefner's philosophy?

While my brother's boys were in from the farm we toured the CNIB and an ice-cream factory. My three and the two visitors were very much impressed by the methods used to test, pasteurize and package milk and its by-products, mainly ice cream.

They were, surprisingly enough, also interested in the people and the work they do in the Institute for the Blind.

I arranged the tour with Mr. MacPherson, Public Relations, of the CNIB. He gave me free access to the buildings where we saw about 20 blind, partially blind and sighted people turning out between 45 and 60 brooms of all types per day.

In the sewing factory, 17 sighted, partially sighted and blind women make various types of clothing.

They include airwomen's uniform dresses, nurses' uniforms, drapes, etc.

Mrs. Betty Estabrook, Recreation and Program Director, led a blind and partially sighted group of elderly men and women in a game of lawn bowling while we watched. They would be guided towards the peg by her voice issuing instructions and her clapping hands.

Mrs. Estabrook stated that variety programs, held in the huge basement auditorium, music, many types of games and light callisthenics were a regular part of the life of the living-in members.

A map with the cities, rivers, mountains and land areas indicated by raised nubs, grooves or ridges proved quite impressive. The place names were in Braille and this caused many questions which sorely taxed my knowledge.

Altogether it was educational and informative for all of us. It proved that going blind does not mean the end of the world.

Mrs. Betty Estabrook and the other staff members deserve to be congratulated for the work they are doing.

The one most interesting item in the creamery, besides the free fudgicle they received, was a machine in the laboratory called a Gryscope which can detect as little as 1/4 cup of water if it were added to eight gallons of milk.

Another rather interesting point was that the homogenizing process consists mainly of pressurizing the milk to 2600 psi. which breaks up the fat molecules and permanently mixes them with the other components in the milk.

Touring points of interest during the summer vacation has become a well liked routine in our family.

Last week's item on Cpl. Bert Youngstrom has him down as Crew Chief on the Expeditor Rejuvenating crew. This is a slight error, he's been rejuvenating Dak's. This rejuvenating kick has had a good effect on him too. He says he feels much better now that he's working again.



THE GIMLI JETS, shown above, won the zone 2 softball play-offs which were played last Saturday and Sunday. Competing in the play-offs were Gimli, Dana, Armstrong, Churchill and Rivers. G/C W. threw the first ball at 9 a.m. on Saturday.

Whitetails will hide in the scantiest of cover and break out like an erratic lightning bolt! Unless you're armed with a light, fast-action gun, you won't have a chance to catch your breath, let alone squeeze off a killing shot.

There are three basic ways of hunting deer: still-hunting, group hunting and just sitting and waiting for the quarry to come to you.

Still-hunting, or stalking, is the real test of a hunter's skill and woodmanship. He must walk the woods silently and slowly with his eyes and ears wide open. He must be ready to react instantly if a deer bounds across his path or is frightened from its bed. The ideal time for still-hunting is just after a rain or light snowfall.

Group hunting is most effective in dense growth. A dozen hunters is best for sport and safety. Half of them cover the crossings and clearings, while the other half flush the deer toward them.

The easiest kills are made by the patient hunters who wait on the runways and crossings deer use on their way to and from feeding and bedding areas. Good crossings are usually found in saddles over ridges, and along ridge tops or swamp edges. As a rule, deer seek lower levels when there is heavy snow on the ground.

The prolific rabbit and gray squirrel are ideal game for the hunter who seeks a day's solitude. Although most cottontails are hunted with the aid of a hound—beagle and bassets being the current number-one choice—the hunter can do his own flushing, provided he's wearing brierproof pants. Sportsmen at the Remington Farms, Chestertown, Md., recommend a 12-gauge shotgun with a No. 6 load as the best all-round

bunny stopper. Unless the hunter is a dead-eye Dick, lighter gun may not kill cleanly. Nothing can ruin a day's sport faster than lose crippled rabbits.

A scared rabbit usually makes a bee-line for dense cover. But a good hound will push him out. Just take your stand close by and wait for the openings. Chances are the cottontail will circle around and turn.

The gray squirrel is the favorite of the young rifleman with a .22. To help this younger set, Remington has designed a series of nylon stocked 22's that are far lighter than other rifles. In fact, squirrel hunting with a minimum weight rifle is the best training for the young Daniel Boone. It takes a good eye and steady hand to plink these little gray ghosts who haunt the oaks, hickories and beeches. When sighting into trees, it's important to line up a large branch or tree trunk to backstop your bullets. The little 22 travels far, and even at the end of its flight it has plenty of sting left.

Duck hunting calls for delicate skillful work with the right shotgun and load.

The majority of ducks found in inland waters are dabblers—that is, they feed in water just deep enough to allow them to "tip up" to reach the bottom. Black ducks, mallards, teal, wood ducks, pintails and widgeons fall into this category. The diving or deep-water ducks inhabit coastal waters and the largest of our fresh-water lakes. This group includes canvasback, redhead, which are currently protected and cannot be hunted this season, greater and lesser scaup, scoters, eiders and mallards.

Decoys, blinds and a good 12-gauge autoloader or pump action shotgun are the basic tools of duck hunting. A retriever is important too to insure that all birds downed are actually recovered.

The most important lesson a duck hunter can learn is when to shoot. Most inexperienced shooters start firing before the birds are in range. The oldtimers suggest waiting until the bird is within 50 yards before opening up. If you have trouble gauging the distance wait until you can see the eye. You can distinguish the color of the bird's body. Such birds usually are in killing range. Another good point: ducks land into the wind, so arrange your decoys and your shooting site with that in mind.

(Continued on page 5)

SEARCH
COM
111 COM

In the last
Transpo
we will
of 111
light
Proficiency
important func
screw at o
and themsel
Administrativ
the Air Force
"star" should
er of aircro
his primar
there a
At 111 KU
is availab
mainly from
Proficiency
light flew
most of whic
at occasion
called on to
Military missio
when there
ings or a
ame distant
FL "Vic"
Proficiency
been joined
The two
ing the m
the instrum
gunning th
names.

STRA CREDI
Continued from
PH
Keeping in
character of
and more lo
with lit
they
to offer
written off
frequency r
eligible. I
only appar
model that
purposes ma
of int
security. Sec
amable an
who fin
they cannot
may have pl
outside l
unless
is one
atures of a

INTRODUCTION
Continued from
Grouse, c
woodcock an
and hunter.
The wise
ing has
young shoote
and filling t
Grouse's bro
makes it ha

Winnipeg's Finest 2-Way
Radio Equipped Taxi Service

**VETERAN'S-NASH
TAXI**

PHONES
Whitehall 2-6101
Whitehall 3-4533

Clean, Modern Cars to Serve
You Anytime, Anywhere

Shoe Fair Ltd.

ATTENTION
AIR FORCE PERSONNEL

FOR YOU AND YOUR FAMILY —
ALL MEN'S, WOMEN'S AND CHILDREN'S SHOES OFFERED TO YOU AT A SPECIAL DISCOUNT OF 10% ON PRESENTATION OF I.D. CARDS.

Headquarters for Savage Shoes,
Gold Cross Women's High Style
Pumps

OFFICERS' OXFORDS BY HART \$22
OFFICERS' OXFORDS BY RICHIE \$13

1853 1/2 PORTAGE AVE.
PHONE Turner 8-2547

INTRODUCTION TO HUNTING
(Continued from page 1)

lightweight, quick-handling rifle that packs a solid punch at distances of a 100 yards or more.

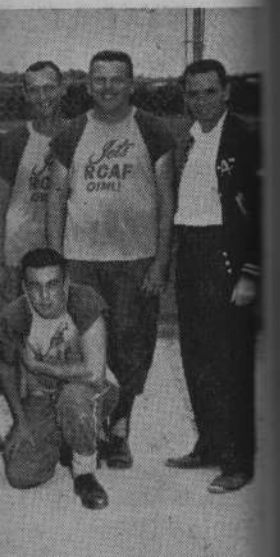
Do you require insurance of any kind?
Phone or Write
JOHN L. BERVEN
(RCAF Retired)
PH. 832-0817 or GL 3-0644
THE MARITIME LIFE ASSURANCE COMPANY
2471 1/2 Portage at Whytewold

SILVER HEIGHTS APTS.
2255 PORTAGE AVE.

PARK TOWERS APTS.
2300 PORTAGE AVE.

Beautiful furnished or unfurnished 3 and 4-room suites in new blocks. Modern appliances and many more features. Please contact

Apex Agencies Ltd.
208 SILVER HEIGHTS
Shopping Centre 832-4888
HANDY TO RCAF STN.



...which were played last Saturday... Churchill and Rivers. G/C Williams



In the last issue, the article dealt with Transport operations and this week we will comment on another part of 111 KU, the Proficiency Flight.

Proficiency Flights fulfil an important function in the RCAF. All aircrew at one time or other, will find themselves "flying a desk" on administrative duties. Naturally the Air Force feels that a "Ground Tour" should not mean that a member of aircrew will lose his skill in his primary role, so, across Canada, there are Proficiency Flights.

At 111 KU there are C45s and C-47s available for the 60 aircrew, mainly from TCHQ, who require proficiency flying. In 1962 the flight flew more than 2400 hours, most of which was practice flying but occasionally the crews were called on to fly on Transport and Mercy missions. The T33's are used when there is a requirement for drugs or a rare type of blood at some distant spot.

F/L "Vic" McCormack, the O i/c Proficiency Flying, has recently been joined by F/L "Marty" Chesler. The two of them will be providing the necessary check rides for instrument ratings and programming the flying times for their patrons.

ASTRA CREDIT UNION

Continued from page 2)

PHILOSOPHY

Keeping in mind at all times the character of our membership, more and more loans were made to people with little security. In many cases they have little or no security to offer. Not one penny has been written off to Astra and the delinquency rate has been almost negligible. It is becoming increasingly apparent to all RCAF personnel that loans for legitimate purposes may be had at reasonable rates of interest with minimum security. Security has caused considerable anxiety for many persons who find that upon transfer they cannot remove goods they may have pledged as security with an outside lender from the province, unless the loan is repaid. This alone is one of the more attractive features of a credit union loan.

INTRODUCTION TO HUNTING

Continued from page 4)

Grouse, quail, pheasants and woodcock are the specialties of the hard hunter.

The wise and canny ruffed grouse has left many a veteran wing shooter stamping the ground and filling the air with oaths. The grouse's brown and gray coloring makes it hard to find and it's not

(Continued on page 6)

THEATRE ENTERTAINMENT

SHOWTIME

Evenings	1830-2030 hrs
Sunday	1830-2030 hrs
Sat. Matinee	1300-1500 hrs
Sun. Matinee	1400 hrs

FRIDAY, 30 AUGUST

HOUSE OF USHER
Adult

SATURDAY, 31 AUGUST
(Matinee)

A BOY, A GIRL, AND A DOG
General

SATURDAY, 31 AUGUST
(Evening)

BAD DAY AT BLACK ROCK
Adult

SUNDAY, 1 SEPTEMBER
MONDAY, 1 SEPTEMBER

GIANT
General

TUESDAY, 3 SEPTEMBER
SHE'LL HAVE TO GO
Adult

WEDNESDAY, 4 SEPTEMBER
THE CHOCOLATE SOLDIER
General

THURSDAY, 5 SEPTEMBER
MARY HAD A LITTLE
Adult

FRIDAY, 6 SEPTEMBER
GAY PUREE
Adult

The Mink In Dak Flight

(A TRUE ? STORY)

By DICK GINTER

A friendly mink, out for a stroll, happened upon a huge building he had never seen before. He had always been taught not to enter a building, but this time curiosity got the best of him and he entered. Upon investigating he found it contained huge aircraft and a horde of biped mammals.

Before recovering from astonishment he saw the bipeds converging upon him. He instinctively attempted to retrace his footsteps but, quite confused at the sudden turn of events, he took a wrong turn and left by a different door where more ferocious looking mammals encircled him.

Terrified by his surroundings and by the monsters who seemed intent on his destruction, the mink dodged back and forth seeking some avenue of escape. Every time he was sure he saw an opening another monster would step in and cover it.

Suddenly he spied what seemed to be the perfect sanctuary; a square hole right on the ground much too small for the bipeds to enter. He scurried through it and . . . Oh! No! A dead end. Before he was able to turn around his whole world turned topsy turvy and the hole he had entered was now above him, beyond his reach.

He looked all around but all he saw was four walls about 12 inches apart, reaching up, up, up to that deceiving hole which now was covered with a grate, effectively ruining any possibility of escape.

When nothing further happened he slowly gathered his wits and

noticed that the monsters around and about his prison were discussing him in excited tones.

"Boy, that's the biggest marten I ever saw," said one badgeringly. "That's no marten, it's a mink," stole through the grating.

"Yeah," was the next gem, "a sapphire mink."

"What'll we do with him?"

"Let's sell him to a mink ranch," was the furry reply.

"Naw, they wouldn't take him. He might be diseased," answered the first man sickly.

"Let's keep him for a mascot."

"Do you think it would be a true representation of 11 hangar?"

"What'll we do with him?"

All this was very terrifying and yet it sounded like they might not do away with him after all.

He settled down to await the results of the discussion which was fading in the distance as the bipeds walked away.

Two terror stricken days, hungry and confused, he suffered his confinement.

Then, during the second night

(Continued on page 6)

PINK AND BLUE



F/O and Mrs. Alan Rodger a son, Alan Michael.

LAC and Mrs. Joseph Francis a daughter, Marie Charmaine.

LAC and Mrs. Lewis Ervin a daughter, Suzette Aline.

LAC and Mrs. Eugene Allen a son, Wayne.

FS and Mrs. George Russell a son, John David.

LAC and Mrs. Joseph Lafortune a son, Jean-Pierre.

LAC and Mrs. John Ramsey a daughter, Donna Lynn.

F/O and Mrs. Edwin Young a daughter, Theresa.

LAC and Mrs. Gary Holt a daughter, Karen Michele.

Cpl. and Mrs. Donald Orr a son, Gordon William.

F/L and Mrs. Stanley Cornford a son, Philip Adrian.

LAC and Mrs. Andre Francis a daughter, Suzanne.

LAC and Mrs. Roy Miller a son, Patrick Shawn.

LAC and Mrs. Calvin Yakel a son, Calvin Neil.

AIRPORT MOTOR HOTEL

ELLICE and BERRY ST.

SU 3-7035



THE KIRKFIELD HOTEL

KIRKFIELD PARK

VE 7-1314

DANGERFIELD HOTELS LTD.

PERSONAL CHEQUING

We give you a statement of your account every month and a free wallet-size chequing kit.



ACCOUNT

CANADIAN IMPERIAL
BANK OF COMMERCE
Over 1260 branches to serve you



W. E. GRAY, Manager

PORTAGE and MOORGATE

VErnon 7-1343

FOR YOUR COMPLETE SHOPPING NEEDS

REMEMBER

SERV-WELL SUPERMARKETS

WINNIPEG'S LARGEST INDEPENDENT
FOOD STORES

930 NOTRE DAME
MOUNT ROYAL & PORTAGE

GOV'T. GRADED MEATS
FRESH PRODUCE

(Continued on page 6)

CLASSIFIED

All ads of a commercial nature will be 15c per agate line (4c per word). Minimum charge 50c. All ads must be paid in advance. Ads will not be accepted by phone. Classified ads will be accepted until 1300 hours on Monday of each week for the current issue of Voxair. Classified ads of a non-commercial nature will be FREE to all employees of RCAF Station Winnipeg. Persons desirous of having their ads appear in more than one issue must resubmit the ad each week they wish it to appear. Address all ads to:

EDITOR
VOXAIR
RCAF Stn. Winnipeg, Westwin, Man.

ALCOHOLICS ANONYMOUS

Did you know that there is an AA group in this unit? If you have a drinking problem and wish to do something about it... contact your Station Padre. Protestant Local 417 and Catholic Local 272 and they will refer you to an AA member. In downtown Winnipeg AA can be contacted at WH 2-1462.

AL-ANON FAMILY GROUPS

If you are living with an alcoholic Al-Anon can help. For information contact your chaplain or the Alcoholism Foundation of Manitoba, Phone GLOBE 3-1044.

SUITES FOR RENT

Georgian Towers, 2391 Portage Ave.—Furnished and unfurnished 2-room suites available. Phone Superintendent 827-4125. Leases to suit your needs. For other accommodations call **Frank Simonite Ltd., 772-9537, 297 Colony St.**

FOR SALE

2 bedroom bungalow, sewer and water, gas on street, garage, paved street, lot 75 ft. by 100 ft., close to school and bus, 100 ft. from Portage Ave. 611 St. Charles St. Phone 832-2247.

Kodak Enlarging Easel 1/2 price. 2 pairs boys summer shoes, size 6, \$1.00 each. 1 New Electric Corn Popper, \$2.00. 1963 30" Kenmore Electric Stove (used less than 2 mos.). 1963 13'2 Cold Spot (Simpson Sears) refrigerator with 100 lb. freezer. Home phone VE 7-4465.

1960 Envoy. Home phone VE 7-4465.

1959 Dodge Suburban Stn. Wagon. In very good cond., 4 new tires, new shocks, two new arms in front end, alignment, wheel balance, new fuel pump, new seal in rear end. \$1,500.00. Ph. VE 2-1035. Cpl. A. A. Martin, MDPH 113A.

FOR RENT

2 bedroom upstairs suite. Available 4 Sept. with carpark, \$100.00 per month. 249 Baltimore Rd. Ph. GR 4-2679.

LOST

Child's wading pool, vicinity Ness and Olive. Phone 837-2321.

CHAPLAIN RETIRES

(Continued from page 1)

sons, Zander, 26, and James, 10. Zander is a chaplain with the RCAF Reserve.

W/C Dunn will be making his home in Kenora, Ont. where the Presbyterian Church has appointed him the Director of the Fellowship Centre. As Director Chaplain Dunn will be responsible for the carrying out of a programme designed to integrate the Indians with their fellow Canadians. Mrs. Dunn and James will accompany W/C Dunn to Kenora.

THE MINK IN DAK FLIGHT

(Continued from page 5)

when all was quiet he decided to do some serious thinking.

The monsters had placed a grate over his prison, well beyond his reach. Perhaps, just maybe, if he could get a hold of it, something might be done. The walls of his prison were of metal, but the grate...? What was it made of? Maybe he could chew his way through. In any case, he had to try something even if it killed him. Death was better than imprisonment.

Gathering the last shreds of courage, he flung himself upward, desperately stretching his forelegs toward his distant goal. He caught his toes in the grating, his heart almost breaking as he realized that it, too, was made of metal. He looked around but nothing came to mind. Then he noticed what seemed to be a space between the top of the wall and the grating. He gingerly edged towards the crack, grasping slot after slot with his forefeet, hurling his body from side to side for added leverage. The whole apparatus twisting and swaying with his lungeing body.

Suddenly, over it went, prison, grating and all, leaving him sprawled on the ground, dazed but once again and not a single monster in sight. Away he went resolving never again to enter a large unknown building.

Free. Yes, the wide open spaces free.

INTRODUCTION TO HUNTING

(Continued from page 5)

likely to move unless kicked. In some areas, favorite haunts are abandoned farms, old stone walls covered with grapevines or bitter-sweet and beechnut stands. In big woodlands hit the creek bottoms and second-growth thickets. Many grouse hunters prefer to work with pointing dogs, although the spring-er spaniel and Labrador retriever are gaining favor, because of their ability to find wounded birds and their tendency to hunt close—important in grouse shooting.

Quail or woodcock bursting into the air offer challenging targets. The inexperienced shooter is tempted to blast into a rising quail covey. But this is not too effective. It's best to concentrate on a pair or single, taking the topmost bird as the covey breaks.

The ringneck pheasant is near the top of the hunting popularity list. They flourish over the northern one-third of the country. Corn is their favorite food, but when that's not available, they'll eat a variety of wild foods including weed seeds, beechnuts, acorns, thorn apples and berries.

Hunting with a good dog is the best insurance of a full bag of ring-necks. Walking-them-up without a canine companion can be tough work and sometimes fruitless. An

ST. JAMES EVENING SCHOOL

(ADULT CLASSES)

REGISTRATION, MONDAY, SEPTEMBER 9th (7:30-9:30 p.m.)

St. James School Board Offices,
2000 Portage Avenue

You may instead register in advance by letter and cheque to School Board before September 9th. Please indicate also your second choice, if any, and address and telephone number.

Applicants for classes where enrolment is too low will be informed in time to register in Winnipeg classes, September 16th at Daniel McIntyre, etc.

CLASSES OFFERED

Grade	Subject	Days	Hours	Time	Fees
Grade XII	Mathematics	(subject to change) Mon. & Wed.	7:30-9:30	130 hrs.	\$20.00
	Chemistry	Mon. & Wed.	7:30-9:30	130 hrs.	\$20.00
	Physics	Tues. & Thurs.	7:30-9:30	130 hrs.	\$20.00
	English	Mon. & Wed.	7:30-9:30	130 hrs.	\$20.00
Grade XI	French	Mon. & Wed.	7:30-9:30	130 hrs.	\$20.00
	Mathematics	Tues. & Thurs.	7:30-9:30	130 hrs.	\$20.00
Grade X	French	Mon. & Wed.	7:30-9:30	130 hrs.	\$20.00
	Mathematics	Tues. & Thurs.	7:30-9:30	130 hrs.	\$20.00
Conversational French (Introduction)	Typing	Mon. & Wed.	7:30-9:30	130 hrs.	\$20.00
		Tues.	7:30-9:30	65 hrs.	\$10.00

All classes will be held in the St. James Collegiate Annex, Ferry Road, commencing in the week of September 23rd.

Evening school students under age 21 who complete the course satisfactorily will receive a refund of fees.

Persons who have organized a group interested in another academic enrichment program should so inform the School Division. (e.g Bookkeeping, Art, etc.)

Contact the St. James School Board Offices at TU 8-7951 for further information.

important fact to remember when shooting at a ringneck is that long tail. It can be misleading. If you want more than feathers, judge your leads accordingly.

Three rules, which might not fill your game bag but will at least

insure that you can come back for another chance, are:

Treat every gun as if it were loaded; always point the muzzle in a safe direction, and be sure your target BEFORE you squeeze the trigger.

PERSONAL CAR CARE SERVICE

AIRFORCE SPECIAL

DON'T MISS THE BOAT... LAST CHANCE to book these SERVICECS. OFFER EXPIRES SEPT. 7 but we will honor all appointments booked by this date. Service will be performed at YOUR CONVENIENCE.

MOTOR WASH... Everyone needs this one. Remove grease, dirt and muck. See your engine clean for the first time since you bought the car. Reg. \$4.50.	\$1.98
LUBRICATION — Quality B.A. products only	98c
ENGINE TUNEUP — Clean plugs, adjust points, reset timing, adjust carburetor. (Parts extra)	\$4.98
BRAKE ADJUSTMENT — Remove wheel, inspect lining and adjust brakes.	98c



KEN BYRNE
MANAGER

Put your car in shape for fall and winter driving... An exceptional opportunity to save on an engine overhaul — 6 cylinder Chev., Pontiac or 1/2 ton truck. 1946 to 1962 models.

\$10 'down — \$10 monthly to acceptable credit!

INCLUDES

New rings and pins, adjust main bearing — ridge ream and deglaze cylinder walls — grind valves — service rocker arms — clean oil pump and screen — tune engine. Gaskets, seals, rings, pins & oil are INCLUDED. REG. \$138.20 SPECIAL. **\$105** If your car is ready for a major tuneup it may well pay you to spend a little more now and be WORRY FREE!

TIRE SPECIALS that just can't be beat! 750x14 NYLON WHITEWALLS. **\$16.99** Name Brand — Plus your old tire. — Terms.

SEE US BEFORE YOU MAKE ANY TIRE DEAL!

12 VOLT BATTERY BARGAIN — No. 459 Delco. Built and backed by General Motors, hard rubber case, rubber separators, loaded when you buy. Only fresh power packed installed. 3 YEAR GUARANTEE. REG. \$25.95. SPECIAL **\$19.99**

B.A. GASOLINES — Clean 3 ways — The Circle tour! Windshield, Oil, A.T. level, battery levels checked. FREE PREMIUM with every \$3.00 purchase. B.A. Credit Card applications prepared, FREE B.A. Football Teletest Schedule — Free B.A. Map Service.
B.A. 88 — 40 3/10 GAL. B.A. 98 — 45 3/10 GAL.

LET US ESTIMATE WITHOUT OBLIGATION BEFORE WE REPAIR FRIENDLY, COMPETENT SERVICE FOR ALL MAKES. OPEN TILL 2 A.M.



SERVICE STATION

1595 ERIN ST.
Ph. SU 3-1351
or SU 3-6425

Bidinosti & Corona

CUSTOM TAILORS

SPECIALISTS IN R.C.A.F. OFFICERS' UNIFORMS AND ACCESSORIES

256 Kennedy St.

Whitehall 2-4685